

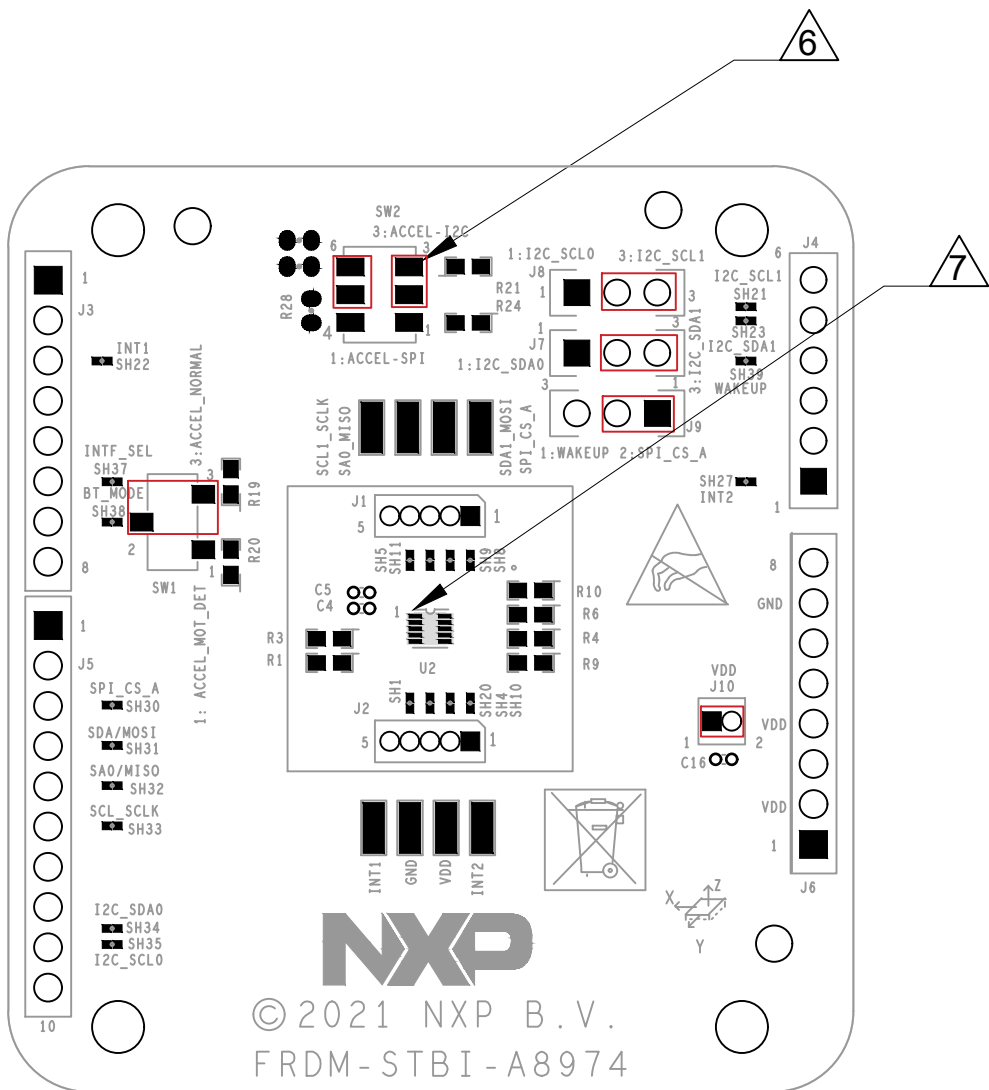
D

C

B

A

NOTES : TRIANGLE SYMBOLS IDENTIFY NOTES ON THIS DRAWING.



PRIMARY SIDE

RoHS : ALL PARTS, MATERIALS AND FINISHED ASSEMBLY SHALL MEET THE RoHS COMMISSION DELEGATED DIRECTIVE (EU) 2015 / 863 OF MARCH 31 2015 AMENDING ANNEX II TO DIRECTIVE 2011 / 65 / EU. A CERTIFICATE OF COMPLIANCE IS REQUIRED UPON REQUEST.

REACH : ALL PARTS, MATERIALS AND FINISHED ASSEMBLY SHALL NOT CONTAIN ANY OF THE SUBSTANCES OF VERY HIGH CONCERN (SVHC) ABOVE THE THRESHOLD VALUE PER THE CURRENT ECHA LIST OF SVHC'S, AND WITH THE ANNEX XIV OF REACH DIRECTIVE 76 / 769 / EEC.. A CERTIFICATE OF COMPLIANCE IS REQUIRED UPON REQUEST.

REVISIONS				
ZONE	REV	DESCRIPTION	DATE	APPROVED
	A	FIRST RELEASE	11/16/21	RICK


NOTES:

1. ALL COMPONENTS MUST BE ABLE TO WITHSTAND THE Pb-FREE ASSEMBLY PROFILES DESCRIBED IN IPC/JEDEC J-STD-020C (LATEST VERSION)
2. WORKMANSHIP SHALL CONFORM TO IPC-A-610 (LATEST REVISION) - CLASS 2 STANDARD.
3. PART SUBSTITUTION CRITERIA : -
ALL COMPONENT SUBSTITUTIONS, INCLUDING PCB, MUST BE APPROVED AND DOCUMENTED BY NXP.
4. MAXIMUM LEAD PROTRUSION ON PRIMARY AND SECONDARY SIDE OF PRINTED WIRING BOARD IS .070". EXCEPT J3-J6.
5. IN CASES OF CONFLICT, ALL PLACEMENT LOCATIONS ARE TO BE GOVERNED BY THE X-Y CENTROID FILE, UNLESS EXPLICITLY STATED IN THIS ASSEMBLY DRAWING. SILKSCREEN REFERENCE DESIGNATORS ARE INCLUDED FOR CONVENIENCE ONLY.

△ SET BELOW FOR PCBA, BY USING 3PCS 211-79847 AND 1PCS 211-79323:
POSITION 1-2: J9,J10
POSITION 2-3: J7, J8, SW1
POSITION 2,3-5,6 : SW2

△ PAY ATTENTION TO U2 ASSEMBLY SINCE NO SOLDER-MASK UNDER IT.

SOLDER PROCESS		
Pb FREE	<input checked="" type="checkbox"/> YES	<input type="checkbox"/> NO
NO-CLEAN	<input type="checkbox"/> YES	<input checked="" type="checkbox"/> NO

UNLESS OTHERWISE SPECIFIED DIMENSIONS ARE IN INCHES. TOLERANCES ARE: DECIMALS .XX ±.020 .XXX ±.010 ✓ RMS ALL MACHINED SURFACES BREAK ALL SHARP EDGES AND CORNERS, REMOVE BURRS. UNDERLINED DIM. NOT TO SCALE. THIRD ANGLE ORTHOGRAPHIC PROJECTION IS USED.	PART NO. 700-48251		 Semiconductors 6501 WILLIAM CANNON DRIVE AUSTIN, TEXAS 78735-8598 USA									
	THIS DOCUMENT CONTAINS INFORMATION PROPRIETARY TO NXP AND SHALL NOT BE USED FOR ENGINEERING DESIGN, PROCUREMENT OR MANUFACTURE IN WHOLE OR IN PART WITHOUT THE CONSENT OF NXP.											
	--- PUBLI (PUBLIC INFORMATION) _X_ NXP INTERNAL USE ONLY --- NXP CONFIDENTIAL PROPRIETARY		TITLE PWB ASSEMBLY FRDM-STBI-A8974									
	APPROVALS		DATE		SIZE		FILE NAME		DWG. NO.		REV	
MATERIAL	DRAWN ROY		11/16/21		B		ASY-48251.DWG		ASY-48251		A	
FINISH	CHECKED ROSS		11/16/21									
HEAT TREAT	DESIGN ENGINEER RICK		11/16/21		SCALE		DO NOT SCALE DRAWING		SHEET		1 OF 2	


D



DRG. NO.	ASY-48251	REV	A
----------	-----------	-----	---

- A

A

		Semiconductors		6501 WILLIAM CANNON DRIVE AUSTIN, TEXAS 78735-8598 US	
--- PUBI (PUBLIC INFORMATION) _X_ NXP INTERNAL USE ONLY --- NXP CONFIDENTIAL PROPRIETARY					
TITLE PWB ASSEMBLY FRDM—STBI—A8974					
SIZE	FILE NAME	DWG. NO.		REV	
B	ASY-48251.DWG	ASY-48251		A	
SCALE		DO NOT SCALE DRAWING		SHEET 2 OF 2	